

Life on the Lakes

Information About Lakes Hamilton & Catherine

Drawdown Information

2010 Drawdown Schedule

Lake Catherine (5 feet)

Start Nov. 6
End Nov. 12

Lake Hamilton (3 feet)

Start Nov. 6
End Nov. 12

Return to normal lake levels in March, 2011

The annual drawdown of Lake Hamilton will be three feet this year. However, Lake Catherine will be lowered five feet. Both drawdowns will begin Saturday, Nov. 6 and be completed by Friday, Nov. 12. Lake Hamilton will drop 4 - 6 inches per day and Lake Catherine will drop 7 - 9 inches per day until completion.

Lake Catherine is being lowered two additional feet this year to allow the Arkansas Game & Fish Commission to replace the deteriorated boat ramp at Rimmel Dam Park. The new ramp will provide a safer, more accessible ramp with a straight line slope that will work well for most lake levels and drawdowns. Construction will last about 60 days during this period, and, if possible, a temporary ramp may be put in place for boaters to launch.

Boat and dock owners should take the necessary precautions to ensure that their boats and docks are able to adjust to the drawdown. Failure to do so can

cause damage to boats and docks. Many floating docks will be able to rest on the lake bed with little or no problem. Property owners located in areas where the shoreline is steep or rocky may wish to move their docks with the lowering of the lake to prevent damage. Entergy Arkansas, Inc. will not require a permit for this temporary relocation of docks to deeper water due to the drawdown.

Lakefront residents are encouraged to contact dock contractors early to schedule dock relocations. It is recommended that dock owners use a licensed electrician if any alterations are made to any electrical wiring in conjunction with the drawdown. Also, lakefront property owners may need to extend their water pump suction lines to deeper water and protect them from exposure to freezing temperatures.

Boaters should be extra cautious while on the lakes during the drawdown period because additional shallow areas will exist and winter rains increase the amount of debris washed into the lakes. Permits must be obtained from Entergy Arkansas for any construction on the lake or shoreline. Long-term relocation, replacement, enlargement or alteration of existing facilities also requires a new permit from Entergy Arkansas. For more information on lakes Hamilton and Catherine including information on the annual drawdown, visit our Website at www.entergy.com/hydro or call Entergy Arkansas Hydro Operations office at 501-844-2148.

Public Lake Cleanup Oct. 2



Join us on Saturday, **October 2** for **"Trash Bash,"** a public cleanup of lakes Hamilton and Catherine and the Ouachita River as well as area roads. The annual litter clean-up day will be followed by a luncheon and activities at **Garvan Woodland Gardens** for everyone picking up litter.

There will be free food, drinks and prizes worth more than \$2,000. This year's grand prize will be a new **laptop computer**.

All participants will also receive free admission to Garvan Woodland Gardens.

The clean-up will begin at 8 a.m. The luncheon will be between 11 a.m. and 1 p.m.

All groups and individuals must register at a check station to participate and be eligible for the awards and prizes.

Come and make a difference and enjoy great bar-b-que at the Gardens.



Check Stations

Lake Catherine

Lake Catherine State Park
Carpenter Dam Park
Rimmel Dam Park
Munro Shoe Factory Ramp

Ouachita River

White Water Park, Malvern

Lake Hamilton

Sunnybrook Landing
Hill Wheatley Park
Power Boats (Central Ave.)
Hulsey Fish Hatchery

www.entergy.com/hydro



Fall, 2010

Remember: Deadline for Shoreline Applications is November 30th

As fall approaches, you may be thinking of replacing that old boat dock with a new stationary dock or installing a seawall. If you want to accomplish any of that during this drawdown, you should send in your applications now before the rush starts. We have several other obligations to work around during the drawdown periods besides seawall and dock permits, and late permit requests put an unpredictable strain on our workload.

We have set an application deadline of **November 30** for construction activities to be worked during the winter drawdown. Applications received after the deadline will be set aside to process after the refill, unless the applicant is willing to pay an expedited processing fee of twice the normal fee to have it evaluated before the end of the drawdown. So a typical dock or seawall permit that costs \$250 now will be \$500 to expedite. Permit applications received after January 31 will not be considered for this expedited process.

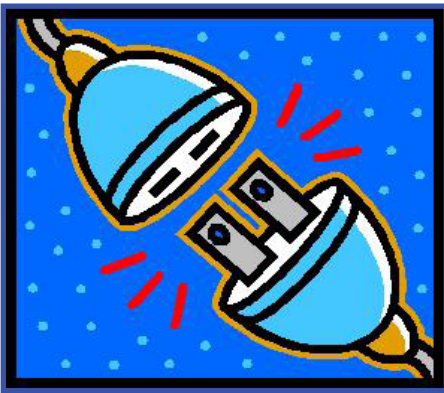
It generally takes us a few weeks to process a typical permit application. However, some applications will require additional reviews by state and federal agencies before they can be approved. Applications for bank stabilization and boat ramps may require a minimum 60-day processing period. Dredging and excavation and commercial dock applications may take up to four months. These should be submitted as early as possible if the proposed construction activities are to be performed during the winter drawdown. You can request an application booklet by calling 501-844-2148, or, you can go online and print a copy of our application booklet at www.energy.com/hydro - under the Private Facility Permitting link on the left hand side.



Electricity and Water Don't Mix

Faulty electrical equipment around a dock can kill. Tragic accidents involving electricity and water happen all too often, but they are preventable.

The July issue of the Electrical Design, Construction & Maintenance Magazine reported a case in which a child was electrocuted in Lake Waccamaw, North Carolina, after water built up in a homeowner's junction box. In this case, children and adults were playing around the dock and under a raised boat lift. A ground wire under the house had been severed, causing the dock's Ground Fault Circuit Interrupter (GFCI) to no longer be effective. Therefore, there was not a protected path for electrical flow at the dock. When the child in the water touched the metal boat lift rail, they became the direct path for current to flow, and the child was electrocuted.



A combination of elements led up to this fatality, including cut wires, a cable rated for underground use that was exposed to the elements when it was run along the side of the dock, and a build-up of water in an improperly installed junction box. All of these dangerous deficiencies are things a licensed electrician could have identified and corrected.

Entergy's guidelines specify that it is exclusively and specifically the responsibility of the applicant/permittee to ensure that all electrical work shall be in compliance with the current version of the National Electrical Code (NEC) standards for Wet Location, Marinas and Boatyards, as well as, the National Electrical Safety Code and all other federal, state, and local codes. We also recommend that you use a licensed electrician for any electrical work on or near the shoreline. This would apply to docks, boat lifts, water withdraw pumps, lights, outlets – anything that requires electricity near the dock or near the shoreline. To find out if your electrician is licensed – ask for their license number and/or call the State Electrical Board at 501-682-4549.

Please be a responsible shoreline property owner and have your facilities checked out by a licensed electrician today! Remember that it is also important to follow the manufacturer's directions on how products are used and installed. For example, most submersible pump manufacturers warn against installing their pumps in lakes, swimming pools, or other places where people may be swimming.



www.energy.com/hydro

Dredging & Excavation Permits Process Improvement

These days it seems everything takes longer to get. Not this time. We have reduced the amount of time it takes to process some permits that involve dredging or excavation in the lakebed or along the shoreline of lakes Hamilton and Catherine. New cooperative agreements with the U.S. Army Corps of Engineers and the Federal Energy Regulatory Commission now enables us to permit activities that may involve larger volumes of excavated material internally without prior specific regulatory approval.

The U.S. Army Corps of Engineers, Vicksburg District, issued General Permit 60 to Entergy Arkansas, Inc. September 18, 2009. This includes dredging, excavation, riprap, bulkheads, boat ramps, and cut-in boat docks. The work to be performed must comply with the conditions of General Permit 60, which can be obtained from www.mvk.usace.army.mil, as well as, any other local state or federal requirements. Entergy Arkansas will file reports to the Corps and FERC on these projects annually.

Entergy's FERC-approved Shoreline Management Plan and our general permitting guidelines still apply to these projects, so the rules

haven't changed. Reviews by some other outside agencies are still required. For example, reviews by the Arkansas State Historic Preservation Office and the Caddo Tribe are required for ground-disturbing activities within the project boundary as governed by our FERC-approved Historic Properties

Management Plan. These activities are evaluated on a case-by-case basis, and excavation activities are restricted in limited use areas designated as Wetlands or Sensitive Fish Spawning & Nursery Areas by the SMP.

There still remains a lot to review, but these new agreements will save many weeks of evaluation time on most permit requests involving excavation or dredging.

Remember, PFDs will keep you from sinking, but not necessarily from drowning

It is important to select a properly sized PFD because one size does not fit all. Also, be sure to read the label to make sure you have the right kind of PFD for your activity!

Respecting the 100' Rule

Arkansas boating law states that it is **ILLEGAL** to operate a vessel at a **greater than a "no wake speed,"** defined as no more than 5mph, when **within 100 feet** of a designated recreation area, dock, pier, raft, float, anchored vessel, dam, intake structure, or other obstruction unless a different speed limit has been established in the area.

So be safe and operate your vessels legally and responsibly while you are out on the water.



FAQ on Shoreline Debris

Q: Can leaves and other yard waste be raked or blown into the dry lake bed to burn?

A: No. Arkansas solid waste codes prohibit depositing waste on another property. We ask that lakefront owners compost or bag and properly dispose of yard waste elsewhere. This will reduce the amount of floating debris on the lake that is commonly observed in the spring after the lakes refill.

Q: Can I burn debris in the dry lake bed that is too difficult to remove by other means?

A: The company will rely on the judgment of the Arkansas Department of Environmental Quality to determine if burning is appropriate. For burning questions, call the ADEQ Air Inspector at 501-520-0627.

Q: What can be done about large floating debris that could become an obstacle for boaters?

A: The company may be able to relocate or remove some man-made debris if the lakefront property owner or concerned boater cannot. Large logs can also be collected from boat ramps. Large logs are defined as a log greater than 10" in diameter and over 25 feet long. Man-made debris include structural members of docks, encapsulated foam, etc. The U.S. Coast Guard Auxiliary may also assist with removing floating boating hazards. Call our office at 501-844-2148 for more detail.

Q: What should be done if a tree falls in the lake?

A: In most cases, if the tree falls from a lakefront property into the lake, the lakefront owner should have it removed. However, fallen trees can provide aquatic habitat for fish and other wildlife and exceptions can be made to leave fallen trees if it is positioned where it will not become a major navigational issue. Call our office at 501-844-2148 for more detail.





Entergy Arkansas, Inc.
 Hydro Operations
 141 West County Line Road
 Malvern, Arkansas 72104

Help Us With Our Mailing List

Please contact Entergy Arkansas, at 844-2148 or send an e-mail to kbogar1@entergy.com with any corrections.

PRSRT STD
 U. S. POSTAGE
PAID
 LITTLE ROCK, AR
 PERMIT NO. 2437

What Requires a Permit?

All shoreline facilities, structures and ground-disturbing activities on Entergy Arkansas, Inc. Project 271 lands or water require a permit from Entergy Arkansas prior to installation or placement. Some of the most common types of facilities, structures and activities that require a permit include:

- ✓ Boat docks
- ✓ Piers
- ✓ Landings
- ✓ PWC ramps
- ✓ Decks
- ✓ Walkways
- ✓ Boardwalks
- ✓ Bridges
- ✓ Boat Ramps
- ✓ Steps
- ✓ Seawalls
- ✓ Riprap
- ✓ Fill/dredge
- ✓ Excavation
- ✓ Roads
- ✓ Waterlines
- ✓ Buoys
- ✓ Utility facilities
- ✓ Water withdrawal
- ✓ Heat/Air exchange piping
- ✓ Inflatable platforms/trampolines
- ✓ Boat lifts (when outside the slip)



To learn more about Entergy Arkansas' shoreline facility permit program and the requirements and specification for private facilities on Entergy Arkansas' property, visit our web site at www.entergy.com/hydro or contact us at (501) 844-2148.

Do you know of lakefront property owners who are not receiving this publication?

Send their names and addresses to:

Entergy Arkansas, Inc.
 Hydro Operations
 141 W. County Line Road
 Malvern, Arkansas 72104

Editors:

Bobby Pharr
bpharr@entergy.com

Blake Hogue
bhogue@entergy.com

Kimberly Bogart
kbogar1@entergy.com

Flow Release Information
www.entergy.com/hydro
 (501) 844-2125

