

Life on the Lakes

Information About Lakes Hamilton & Catherine

Drawdown Information

The annual drawdown of Lake Hamilton will be 5 feet and will begin Nov. 3. The drawdown for Lake Catherine will be 3 feet this year and will also begin Nov. 3.

Lake levels will be reduced about six inches per day on Lake Hamilton and about four inches per day on Lake Catherine. The drawdown will be complete on both lakes by Nov. 11. The water released at the dams will be used to generate emission-free, low-cost hydroelectric power. Both lakes will return to their normal summertime levels in March 2013.

In addition to facilitating shoreline maintenance and inspection, the annual drawdown is part of a plan to help control nuisance aquatic vegetation. Entergy Arkansas Inc. coordinates the annual winter drawdown with the Arkansas Game and Fish Commission. Fisheries, vegetation, facility management and downstream water needs are the key factors considered in deciding the drawdown's depth and timing.

The reason for the additional drawdown on Lake Hamilton is to combat an excessive growth of two common types of aquatic vegetation called Chara and filamentous algae. "These species of vegetation are not uncommon in our lakes, but the warmer-than-normal temperature and clearer water this year has caused them to grow more abundantly, causing a problem for boaters and swimmers," said Bobby Pharr, process superintendent of Entergy Arkansas hydro operations. "Clearer water from lack of rainfall has allowed sunlight to penetrate deeper water, and, as a result, promoted increased aquatic plant growth."

Boaters should use caution while on the lakes during the drawdown period because there will be more shallow areas, and winter rains can increase the amount of debris washed into the lakes. Owners of boats and floating docks should also take precautions to ensure they are able to adjust to the drawdown. Failure to do so may cause damage to them. Some docks will be able to rest on the lakebed with little or no problem. If the shoreline is steep or rocky in a particular area, dock owners may need to temporarily move docks to deeper water. If relocating a dock, be sure it does not restrict navigation or become a boating hazard.

Entergy Arkansas will not require a permit for the temporary relocation of docks due to the drawdown, but the dock must be returned to its permitted location once the lake returns to its summertime level. Entergy Arkansas also recommends using a licensed electrician to make any alterations to wiring in conjunction with the drawdown. (See article on page 3 "New Law on Dock Electrical")

Lakefront property owners needing further information on the drawdown schedule or shoreline permitting guidelines and applications for lakes Hamilton or Catherine can call Entergy Arkansas' hydro operations office at 501-844-2148 or visit the hydro operations website at www.entergy.com/hydro. Visitors to the website may also subscribe to receive lake and flow information by email. To receive weekly information on the operation of the lakes, the public can "Like" hydro operations' Facebook page at www.facebook.com/lifeonthelakes.



2012 Drawdown Schedule

Lake Catherine (3 feet)

Start	Nov. 3
End	Nov. 11

Lake Hamilton (5 feet)

Start	Nov. 3
End	Nov. 11

Return to normal lake levels in March, 2013



www.facebook.com/lifeonthelakes

Entergy Arkansas, Inc. - Lake Hamilton & Lake Catherine Community



Fall, 2012

Remember: Deadline for Shoreline Applications is November 30th

As fall approaches, you may be thinking of replacing that old boat dock with a new stationary dock or installing a seawall. If you want to accomplish any of that during this drawdown, you should send in your applications now before the rush starts. We have several other obligations to work around during the drawdown periods besides seawall and dock permits, and late permit requests put an unpredictable strain on our workload that may prevent us from completing your application.

We have set an application deadline of November 30 for construction activities to be worked during the winter drawdown. Applications received after the deadline will be set aside to process after the refill, unless the applicant is willing to pay an expedited processing fee of twice the normal fee to have it evaluated before the end of the drawdown. So a typical seawall permit that costs \$550 now will be \$1,100 to expedite. Permit applications received after January 31 will not be considered for this expedited process.

It generally takes us a few weeks to process a typical permit application. However, some applications will require additional reviews by state and federal agencies before they can be approved. Applications for bank stabilization and boat ramps may require a minimum 60-day processing period. Dredging and excavation and commercial dock applications may take up to four months. These should be submitted as early as possible if the proposed construction activities are to be performed during the winter drawdown. You can request an application booklet by calling 501-844-2148 or you can go online and print a copy of our application booklet at www.entergy.com/hydro - under the Private Facility Permitting link on the left hand side.



Dredging & Excavation Permits Process Improved

These days it seems everything takes longer to get, but not this. We have reduced the amount of time it takes to process some permits that involve dredging or excavation in the lakebed or along the shoreline of lakes Hamilton and Catherine. New cooperative agreements with the U.S. Army Corps of Engineers and the Federal Energy Regulatory Commission now enable Entergy to permit activities that may involve larger volumes of excavated material without their prior specific approval.

The U.S. Army Corps of Engineers, Vicksburg District, issued General Permit 60 to Entergy Arkansas, Inc. September 18, 2009. The permit includes dredging, excavation, riprap, bulkheads, boat ramps, and cut-in boat docks. The work to be performed must comply with the conditions of General Permit 60, which can be obtained from www.mvk.usace.army.mil, as well as, any other local state or federal requirements. Entergy Arkansas will file reports to the Corps and FERC on these projects annually.

Entergy's FERC-approved Shoreline Management Plan and our general permitting guidelines still apply to these projects, so the rules haven't changed and reviews by some other outside agencies are still required. For example, reviews by the Arkansas State Historic Preservation Office and the Caddo Tribe are required for ground-disturbing activities within the project boundary as governed by our FERC-approved Historic Properties Management Plan. These activities are evaluated on a case-by-case basis, and excavation activities are restricted in limited use areas designated as Wetlands or Sensitive Fish Spawning & Nursery Areas by the SMP.

There still remains a lot to review, but these new agreements will save many weeks of evaluation time on most permit requests involving excavation or dredging.



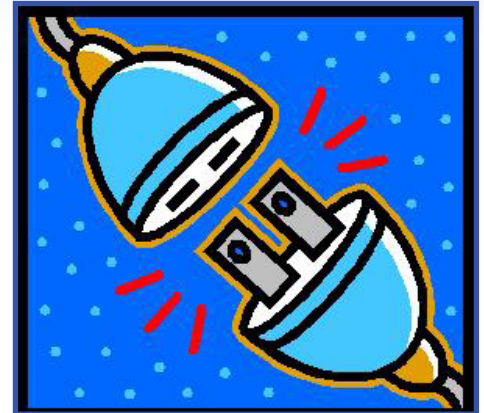
New State Law on Dock Electrical

We recently learned of a law that was passed in 2011 by the Arkansas State Legislature called “Boat Dock and Marina Safety” and subtitled, “Jesse’s Law.” Act 571 was passed by the Arkansas State Legislature after there had been several cases of electrocution of swimmers near docks in Arkansas and surrounding states.

The Act states:

“Arkansas is known for its beautiful and abundant lakes and rivers, which provide a draw for tourism and a boost for our economy. Our lakes and rivers should be a safe place for children and families to enjoy. There have been cases recently where children have died because the water where they were swimming was electrified by the ungrounded and improper connection of electricity to boat docks and marinas.

Electricity and water create a deadly combination that can paralyze a swimmer, which can result in the swimmer drowning, and children who are swimming are particularly vulnerable to electrocution and the shock in the water. Bringing boat docks and marinas up to the National Fire Protection Association Standards for Marinas and Boatyards and the National Electric Code is necessary for the protection and safety of all of those who enjoy our lakes and rivers for recreation and to protect our tourism industry.”



The Law requires:

- The owner and operator of a boat dock or marina in the state shall install and maintain electrical wiring in accordance with the National Fire Protection Association Standards for Marinas and Boatyards and the National Electric Code to prevent shock, electrocution, or injury to users of the facility and swimmers in the surrounding area.
- Each boat dock and marina in the state that is not located on a federal impoundment owned or managed by the United States Army Corps of Engineers shall have signage that warns of electric shock hazards in the waters surrounding the boat dock or marina and the risk of swimming in the area as provided under this section.
- The signage under this section shall be placed to give adequate notice to persons using the boat dock or marina or swimming near the boat dock or marina of the electric shock hazard risks of the waters around the boat dock or marina.
- The signage shall state:
 - **“ELECTRIC SHOCK HAZARD RISK: SWIM AT YOUR OWN RISK”**
 - or
 - **“WARNING ELECTRIC SHOCK HAZARD”** on one sign and another separate sign that states **“SWIM AT YOUR OWN RISK”**.

You can view Act 571 in its entirety at <http://www.arkleg.state.ar.us/assembly/2011/2011R/Acts/Act571.pdf>.

Entergy Arkansas, Inc. current guidelines for docks and other shoreline facilities states that it is exclusively and specifically the responsibility of the permittee (dock/facility owner) to ensure that all electrical work complies with federal, state and local codes. We have recently updated our guidelines to include the aforementioned National Fire Protection Association Standards for Marinas and Boatyards.

We recommend that you use a licensed electrician for any electrical work on or near the shoreline. This would apply to docks, boat lifts, and water withdraws pumps, lights, outlets – anything that requires electricity near the dock or near the shoreline.

Electricity and Water Don't Mix



Check Stations

Lake Catherine

Lake Catherine State Park
Carpenter Dam Park
Munro Shoe Factory Ramp

Ouachita River

White Water Park, Malvern

Lake Hamilton

Sunnybrook Landing
Hill Wheatley Park
Power Boats (Central Ave.)
Hulsey Fish Hatchery

Public Lake Cleanup Sept. 29

Join us on Saturday, Sept. 29 for "Trash Bash". a public cleanup of lakes Hamilton and Catherine and the Ouachita River, as well as area roads. The annual litter clean-up day will be followed by a luncheon and activities at Garvan Woodland Gardens for everyone picking up litter.

There will be free food, drinks and prizes worth more than \$3,000. This year's grand prizes will be a new laptop computer and flat screen TV. All participants will also receive free admission to Garvan Woodland Gardens.

The clean-up will begin at 8 a.m. The luncheon will be between 11 a.m. and 1 p.m. All groups and individuals must register at a check station to participate and be eligible for the awards and prizes.

Come and make a difference and enjoy great barbeque at the Gardens.



What Requires a Permit?

All shoreline facilities, structures and ground-disturbing activities on Entergy Arkansas, Inc. Project 271 lands or water require a permit from Entergy Arkansas prior to installation or placement. Some of the most common types of facilities, structures and activities that require a permit include:

- ✓ Boat docks
- ✓ Piers
- ✓ Landings
- ✓ PWC ramps
- ✓ Decks
- ✓ Walkways
- ✓ Boardwalks
- ✓ Bridges
- ✓ Boat Ramps
- ✓ Steps
- ✓ Seawalls
- ✓ Riprap
- ✓ Fill/dredge
- ✓ Excavation
- ✓ Roads
- ✓ Waterlines
- ✓ Buoys
- ✓ Utility facilities
- ✓ Water withdrawal
- ✓ Heat/Air exchange piping
- ✓ Inflatable platforms/trampolines
- ✓ Boat lifts (when outside the slip)



To learn more about Entergy Arkansas' shoreline facility permit program and the requirements and specification for private facilities on Entergy Arkansas' property, visit our web site at www.entergy.com/hydro or contact us at (501) 844-2148.

Do you know of lakefront property owners who are not receiving this publication?

Send their names and addresses to:

Entergy Arkansas, Inc.
Hydro Operations
141 W. County Line Road
Malvern, Arkansas 72104

Editors:

Bobby Pharr
bpharr@entergy.com

David Batson
dbatson@entergy.com

Kimberly Bogart
kbogar1@entergy.com

Flow Release Information
www.entergy.com/hydro
(501) 844-2125